

Original Research Paper

# Prevalence and Genotypic Analysis and Antibiotic Resistance of *Salmonella* Species Isolated from Imported and Freshly Slaughtered Chicken

<sup>1</sup>Wael K. Elfeil, <sup>2</sup>Mahmoud E. Ezzat, <sup>4</sup>Amira Fathi,  
<sup>2</sup>Mennat-Allah A. Alkilany and <sup>3</sup>Reham R. Abouelmaatti

<sup>1</sup>Department of Avian and Rabbit Medicine, Faculty of Veterinary Medicine, Suez Canal University, Ismailia, Egypt

<sup>2</sup>Department of Bacteriology, Immunology and Mycology,

Faculty of Veterinary Medicine, Suez Canal University, Ismailia, Egypt

<sup>3</sup>Microbiology Unit, Reference Laboratory for Veterinary Quality Control on Poultry Production, Mansoura Branch, Egypt

<sup>4</sup>Department of Biochemistry, Norman Bethune College of Medicine, Jilin University Changchun, Jilin, China

## Article history

Received: 17-07-2019

Revised: 09-01-2020

Accepted: 22-05-2020

Corresponding Author:

Mahmoud E. Ezzat

Department of Bacteriology,

Immunology and Mycology,

Faculty of Veterinary

Medicine, Suez Canal

University, Ismailia, Egypt

Email: ezzat.scu@gmail.com

**Abstract:** Salmonellosis is a bacterial disease caused by different types of *Salmonella* species and associated with clinical disease in both human, birds and livestock species. Salmonellosis associated with severe economic impacts either from losses in poultry farm due to pathological picture losses, cost of medication, condemnation in slaughterhouse or zoonotic important. This study focused on the prevalence of *Salmonellae* in imported frozen and freshly slaughtered chicken in Dakahlia Governorate, Egypt. A total of 273 samples were collected from 66 examined birds (24 from Balady chickens "Native Bred", 23 from Broiler chicken and 19 from frozen chicken). Nineteen out of 66 chickens (6.95%) *Salmonella* species were isolated, representing: 10 from Balady (native bred) chicken (8.3%), eight from broiler chicken (7%) and one from imported frozen chicken (2.61%). The serotyping of the *Salmonellae* isolated from chickens as follow (5) (26.3%) *S. typhimurium*, (5) (26.3%) *S. kentucky*, (3) (15.8%) *S. infantis* (2) (10.5%) *S. enteritidis*, (2) (10.5%) *S. tamale*, (2) (10.5%) *S. newport*. PCR assay was carried out on nine serovars (2) *S. enteritidis*, (2) *S. typhimurium*, (2) *S. kentucky*, (1) *S. infantis*, (1) *S. tamale*, (1) *S. newport* detect the presence of *InvA* (invasion protein *InvA*), *bla*<sub>TEM</sub> (beta-lactamase TEM), *aacC* (Aminoglycoside N (3)-acetyltransferase IV), *qepA* (Quinolone efflux pump), *tetA(A)* (Tetracycline resistance protein, class D) and *sulI* (Dihydropteroate synthase type-1) genes, the percentage respectively was 100%, 100%, 33.3, 33.3%, 88.89%, 77.78% in examined *Salmonella* strains. The susceptibility of *Salmonella* serovars to chemotherapeutic agents showed high sensitivity to levofloxacin and gentamycin, but the highest resistance was to sulfamethoxazole. The increased prevalence rate of *Salmonella* species isolation from chicken and chicken meat carrying Multidrug Resistance (MDR) genes for commonly used antimicrobial agents, consider a critical threat for public health issues. Further studies are required to understand *Salmonella* spp epidemiology and to limit the spread of multidrug-resistant types.

**Keywords:** *Salmonella*, Fresh Chicken, Frozen Meat, Food Poisoning

## Introduction

Salmonellosis is a significant global public health issue and causes high morbidity rate and has a significant economic impact. Foodborne diseases persist

in many countries and consider the most important public health problem. There is global improvement in food processing practices, hygiene measures, education of food handlers on the potential risks and information to consumers for proper utilization, but still so far to

eliminate the foodborne pathogen problem (Ruban *et al.*, 2010). Infection with *Salmonellae* is still the first reported cause of bacterial foodborne illness all over the world and associated with gastroenteritis disorders (Huong *et al.*, 2006; WHO, 2004). Chicken meat Contaminated by *Salmonellae* is the most significant potential hazard of human gastroenteritis worldwide; as several reports correlate the human salmonellosis cases to the consumption of contaminated chicken meat and byproducts with different *salmonella* species (Beli *et al.*, 2001). The majority of human salmonellosis infections are derived from the consumption of contaminated chicken meat, although there are several other transmission routes of infection (Hassanein *et al.*, 2011). Contaminated frozen chicken products and byproducts have been considered potential source for salmonellosis; where the presence of *Salmonella* species in frozen chicken products maybe associated with potential infection risk to human if the product is improperly cooked (Dominguez and Schaffner, 2009). Chicken stored at variable temperatures and chickens brought from wet markets has higher levels of *salmonella* than those brought from other hygienic retail store; also, chickens produced by integrated companies have lower levels of *salmonella* than non-integrated companies due to higher biosecurity measures (Donado-Godoy *et al.*, 2014). The risk of salmonellosis from chilled chickens higher than frozen chicken carcasses, which may associate to the preparation practices and hygienic measures (Donado-Godoy *et al.*, 2012). Antibiotics administration is an important tool in the reduction the incidence and mortalities associated with avian salmonellosis (Duarte *et al.*, 2009). The recent reports highlighted the increased rate of MDR *salmonella* species which may correlate to the massive and improper usage of antimicrobial agents in human and veterinary medicine and it represent a global public health problem (Cruchaga *et al.*, 2001; Mosalem, 2016) (Eid *et al.*, 2016; Elfeil *et al.*, 2016; Enany *et al.*, 2018). The problem of MDR *salmonella* spread all over the world with higher prevalence rate in in the developing nations with no clear prevalence mapping to such genes (Eid *et al.*, 2019). The studying of drug resistance and MDR patterns between the different *Salmonella* strains gives not only important evidence to the clinician for the best therapeutic regime and suitable choices to control the reported cases but also an important tool in devising and scheduling a proper chemoprophylactic and chemotherapeutic drug regimens within a geographical area and highlighted the need for developing suitable antimicrobial agents against certain pathogen (Abouelmaatti *et al.*, 2013; Elfeil *et al.*, 2012; Murugkar *et al.*, 2005). In Egypt, *Salmonella* reported the highest rate of foodborne infection via chicken's meat (WHO, 2004; 2007). The problem in Egypt is old

where; a prevalence survey has been conducted on year 1979 at upper Egypt region (Assiut, New-Valley and Suhag Governorates) and examined bacteriologically dead chickens and ducks as well as 2325 fecal swabs from living chickens and ducks suffered from paratyphoid infections; they isolated 17 *Salmonella* serotypes, where the most common types were *S. hessarek*, *S. orian* and *S. miami* (Bayoumi *et al.*, 1979). Moreover, In Belbais El-Sharkia Governorate, another prevalence report applied on 1989 and has been recorded *salmonella* isolation from 10.7% of chickens and ducks in contact with human diarrheic cases (Taha, 1989) that similar to other prevalence report in east Egypt regions applied on 2016 and recorded *salmonellae* isolation from 10.5% and 14.3% of chicken and pigeon in contact with human diarrheic cases (El-Demerdash *et al.*, 2016). In Dakahlia Governorate, *salmonella* species were isolated from 13.3% of chickens of different ages from farms in Bilkas and Gamasa (Moawad, 2009). While in Alexandria governorate, *salmonella* species were isolated from layer flocks in poultry farms with a percentage of 11.4% (Draz *et al.*, 1997). Lower percentages than the previously mentioned were reported by Sadoma, (1997) who isolated *Salmonellae* from six out of 300 (2%) cloacal swabs collected from 30 chicken farms at different localities in Gharbia (Sadoma, 1997). Nabil and Yonis (1999) isolated *S. typhimurium*, *S. anatum* and *S. pullorum* from 2.5% of chickens and 4% of ducks samples from fattening and laying farms in Kafr El-Shaikh Governorate and Ahmed *et al.* (2009); isolated *salmonella* from chickens reared in a rural village in El-Sharkia province with a percentage of 1.7%; the serotyping study of the isolated strains showed that they were grouped into two different serogroups, *S. enteritidis* and *S. typhimurium* constituting 80% and 20%, respectively. A study was performed in Qalyubia governorate, Egypt and highlighted the prevalence of *S. kentucky*, *S. infantis*, *S. enteritidis*, *S. typhimurium*, *S. chiredzi* and *S. tsevie* in commercial broiler chicken flocks (El-Ghany *et al.*, 2012). This study focused on examining random samples from different stores and slaughter houses and examine the prevalence of different *salmonella* species in frozen and freshly slaughtered chicken's mean and check the presence of antimicrobial resistant, MDR and virulence genes in collected isolates, which can seriously affect the human health and the medication regime and can return again to poultry farms through works in the poultry industry.

## Materials and Methods

### Sample Collection

A total of 273 samples (235) from freshly slaughtered and (38) from imported frozen chickens were aseptically

collected from birds' markets in Dakahlia Governorate, Egypt. The samples were (liver, cecum, lung, breast muscle and thigh muscle). All samples were collected in sterile plastic bags and transferred immediately in icebox to Reference Laboratory for Veterinary Quality Control on Poultry Production for bacteriological examination.

#### Isolation of *Salmonella*

The collected samples weighted then inoculated in buffered peptone water (1:10 dilution) then incubated at 37±1°C for 16-20 h According to ISO 6579 (2002). The pre-enrichment broth was mixed after incubation, then sub culture in two different broths; where 0.1 mL of the broth was transferred into a tube containing 10 mL of Rappaport-Vassiliadis medium with soya (RVS broth) and incubated at 41.5°C for 24 h; another 0.1 mL of the pre-enrichment broth was transferred into a tube has 10 mL of Muller-Kauffmann Tetrathionate-Novobiocin, broth (MKTTn broth) and incubated at 37°C for 24 h. After incubation, a loop-full of the RVS and MKTTn broth were streaked separately onto the surface of Xylose Lysine Deoxycholate Agar (XLD agar) and Hektoen Enteric (HE agar). The plates were incubated in an inverted position at 37°C for 24 h then checked for growth of typical *Salmonella* colonies. Typical colonies of *Salmonella* grow on XLD agar with a black center and a lightly transparent zone of reddish color due to the color change of the indicator. Lactose-positive *Salmonella* is yellow with or without blackening on XLD agar. On HE colonies appeared as deep blue.

#### Biochemical Identification

Purified isolates were examined by different biochemical reactions According to ISO 6579 (2002) either by oxidase, urea hydrolysis, H<sub>2</sub>S production on TSI, lysine decarboxylation, citrate utilization and indole as shown in Table 1.

#### Serogrouping of *Salmonella*

The isolates that were identified biochemically as *Salmonella* were subjected to serological identification according to Kauffman-White Scheme (Kauffmann, 1972) for determination of somatic (O) and flagellar (H) antigens (Cruickshank, 1975).

#### Antimicrobial Susceptibility Testing

The pure identified *Salmonella* strains were tested for antimicrobial susceptibility; where the test was done by the agar disc diffusion method as previously described (Finogold and Martin, 1982).

#### Detection of Virulence Genes and Antibiotics Resistance Genes

The purified *salmonella* isolates subjected to DNA Extraction using QIAamp DNA mini kit (Qiagen, Germany) according to manufacturer's instructions. the extracted DNA subjected to PCR screening for the presence of selected virulence and antimicrobial resistant genes using specific Oligonucleotide primers sets listed in Table 2.

**Table 1:** Biochemical identification of suspected *Salmonella* species

Biochemical test	Reaction	Result
Oxidase reaction	Negative	Colorless
Urease hydrolysis test	Negative	Yellow (Medium remain original yellow)
H <sub>2</sub> S production in Triple sugar iron agar (TSI)	Positive	Alkaline (red) slant, acid (yellow) butt with or without - blackening due to H <sub>2</sub> S production. (k/A/G/H <sub>2</sub> S)
Lysine decarboxylation test	Positive	Purple color with H <sub>2</sub> S at the middle of the tube
Citrate utilization	Positive	Development of deep blue color within 24-48 h
Indole reaction	Negative	Yellow ring.

**Table 2:** Oligonucleotide primers sequences Source

Primer	Sequence	Amplified product	Reference
<i>tetA(A)</i>	GGTTCACCTCGAACGACGTCA CTGTCCGACAAGTTGCATGA	576 bp	Randall <i>et al.</i> (2004)
<i>blaTEM</i>	ATCAGCAATAAACCAGC CCCCGAAGAACGTTTTTC	516 bp	Colom <i>et al.</i> (2003)
<i>aacC</i>	GGCGCGATCAACGAATTTATCCGA CCATTCGATGCCGAAGGAAACGAT	448 bp	Lynne <i>et al.</i> (2008)
<i>sull</i>	CGGCGTGGGCTACCTGAACG GCCGATCGCGTGAAGTTCCG	433 bp	Ibekwe <i>et al.</i> (2011)
<i>qepA</i>	CGTGTGCTGGAGTTCTTC CTGCAGGTAAGTGCATG	403 bp	Cattoir <i>et al.</i> (2008)
<i>invA</i>	GTGAAATTATCGCCACGTTCCGGCAA TCATCGCACCGTCAAAGGAACC	284 bp	de Oliveira <i>et al.</i> (2006)

## Results and Discussion

Poultry industry suffer from several pathogen threats in Egypt either bacterial like *Salmonella*, *Pasteurella*, *Clostridium* or viral types like Avian influenza virus (AIV), Newcastle Disease Virus (NDV), Infectious Bronchitis Virus (IBV), Infectious Bursal Disease Virus (IBDV) or parasitic as coccidia and it associated with severe economic on the industry and human public health impact (Algammal and Elfeil, 2015; Ayoub *et al.*, 2019; Diab *et al.*, 2019; Eid *et al.*, 2016; 2019; Elhady *et al.*, 2018; Sedeik *et al.*, 2018; 2019; Sultan *et al.*, 2019a; 2019b). *Salmonella* consider one of the major bacterial threats affect poultry industry and associated with severe economic losses. In this study, 66 birds, (24) from Balady chickens, (23) Broiler chickens and (9) Frozen chickens were examined for the presence of *Salmonella*; the number and percentage of positive samples from Balady chickens” Native breed” (10; 8.3%), Broiler chickens (8; 7%) and Frozen chickens (1; 2.61%); where the highest percentage of *Salmonella* isolation was from Balady chickens, while the lowest percentage was from frozen chickens (Table 3). The obtained results matched with other reports describing the prevalence of *salmonella* in chicken and chicken products in other Egyptian governorates, where Ezzat *et al.* (2014); who found that *Salmonella* species isolates, representing: 7.5% from apparently healthy chicken in east Egypt regions and Ibrahim *et al.* (2013); who highlighted the *Salmonella* species occurrence as 9-10% in examined breeders flocks; Rabie *et al.* (2012); who reported the prevalence of *Salmonella* was 14% and 4% in chickens and raw chickens meat respectively in Toukh, Egypt and Hassanein *et al.* (2011); reported 52% of frozen chicken fillet and 36% of frozen chicken leg samples in Assiut, Egypt and the identified dominant serovar was *S. enteritidis*. The obtained data agreed with other reports outside Egypt, as in brazil Medeiros *et al.* (2011), isolated *Salmonella* in 0.0-8.9% from the collected chicken carcass parts and Le Bouquin *et al.* (2010); who carried out a nation-wide survey in France on the period from October 2005 to September 2006 and examined 370 randomly selected French commercial broiler chicken flocks to determine the prevalence of different *Salmonella* species and the results showed prevalence of different serotypes in 8.6% of the examined flocks. In Croatia, a study highlighted isolation of *Salmonella* from 66 samples of fresh, retail-cut chicken meat and frozen ground chicken meat with 10.6% incidence among the examined samples (Kožačinski *et al.*, 2006). In Pakistan, Soomro *et al.* (2010); recorded *Salmonella* species in Hyderabad, Pakistan of 38% from poultry meat retail markets. Regarding post slaughter carriage rates the obtained

results matched with previous reports in different countries, where; Chenu *et al.*, (2011); reported that the post slaughter carriage rates of *Salmonella* on broiler carcasses present with variable rates according to the country and continents with may correlated to the hygienic and processing practice; where the prevalence rate was 36.7% in Australia; 21% in the USA and 15.7% in Europe.; White *et al.* (2001); who recorded that 3.0% of the retail examined meat samples (turkey, chicken, beef and pork) were positive for different *Salmonella* strains in the Greater Washington region, USA; Kaushik *et al.* (2014); who reported that the incidence of *Salmonella* in chicken meat samples was 23.7% in India, Donado-Godoy *et al.* (2012); who recorded 27% of the carcasses sampled and Chilled chickens were positive for *Salmonella* in Colombia; The European Food Safety Authority; carried out a European Union-wide baseline prevalence survey on different strains of *Salmonella* on broiler carcasses, around 10132-broiler production batches were collected and examined from around 561 slaughterhouses in 26 different European Union (EU) Member States and from two countries not belonging to the EU; the survey analysis showed a *salmonella* Community prevalence of 15.61% with wide margin of variation in between the different EU states (0.0% to 26.6%) and in one state the prevalence rate reach 85.61% in the examined samples and the most predominant serotypes was *S. infantis* (Authority, 2010).

*Salmonella* strains were serotyped using poly and monovalent "O" and "H" antisera and the results revealed that 19 strains were serotyped as: *S. typhimurium* (5; 26.3%), *S. kentucky* (5; 26.3%), *S. infantis* (3; 15.8%), *S. enteritidis* (2; 10.5%), *S. tamale* and (2; 10.5%) and *S. newport* (2; 10.5%) as shown in Table 4. These results vary from country to another, where Medeiros *et al.* (2011) reported different percentage in brazil where *S. enteritidis* (48.82%), *S. infantis* (7.6%) and *S. typhimurium* (7.2%) from chicken, Ezzat *et al.* (2014); who reported that the serotyping of the *Salmonellae* from chickens were (8; 21.6%) *S. enteritidis*, (5; 13.5%) *S. kentucky*, (2; 5.4%) *S. newport*, were isolated from broilers. Where in EU; baseline Community prevalence survey of *Salmonella* showed the most predominate serotypes in broiler carcass was *Salmonella* *infantis* and *Salmonella* *enteritidis* and accounted as 1/3 and 1/6 of the *Salmonella* isolates, respectively (Authority, 2010); in France, Le Bouquin *et al.* (2010); reported that the most prevailing serovar was *S. hadar* followed by *S. mbandaka* and *S. anatum* ; while in Pakistan, Soomro *et al.* (2010); reported the most prevailing serogroups among chickens were *S. typhi*, *S. enteritidis*, *S. typhimurium* and *S. pullorum*.

**Table 3:** Incidence of Salmonella isolation from chickens

Types of chicken meat	Types of samples	No. of examined samples	No. of positive samples	Proportion
Balady chicken	Liver	24	2	8.30
	Cecum	24	2	8.30
	Lung	24	2	8.30
	Breast	24	2	8.30
	Thigh	24	2	8.30
	Total	120	10	8.30
Broiler chicken	Liver	23	2	8.70
	Cecum	23	2	8.70
	Lung	23	0	0.00
	Breast	23	2	8.70
	Thigh	23	2	8.70
	Total	115	8	7.00
Frozen chicken	Breast	19	1	5.26
	Thigh	19	0	0.00
	Total	38	1	2.60
Total		273	19	6.95%

**Table 4:** Numbers and percentage of different serotypes of Salmonellae isolated from chickens

Isolated serotypes		
Serotype	No. of serotypes	%
<i>S. Typhimurium</i>	5	26.3
<i>S. Enteritidis</i>	2	10.5
<i>S. Kentucky</i>	5	26.3
<i>S. Infantis</i>	3	15.8
<i>S. Tamale</i>	2	10.5
<i>S. Newport</i>	2	10.5
Total	19	100.0

Regarding antimicrobial resistant among the examined 19 different *salmonella* isolates; the highest resistant to sulfamethoxazole (19/19; 100%), then resistance to tetracycline and amoxicillin (15/19; 78.9%), resistance to neomycin (12/19; 63.2%), resistance to chloramphenicol (8/19; 42.1%), resistance to doxycycline and colistin (5/19; 26.3%), resistance to ciprofloxacin and gentamycin (4/19; 21.1%) and the lowest resistant was to levofloxacin (3/19; 15.8%) as shown in Table 5. The data obtained from this study nearly in coordinated with Ahmed *et al.* (2014); who conducted a survey on *salmonella* MDR genes in Egypt and concluded that 47/69 *Salmonella* isolates (68.1%) showed MDR phenotypes to at least three different antimicrobial classes, Yang *et al.* (2002); who tested 22 *S. typhimurium* and 14 *S. enteritidis* isolates from animals and birds at Korea during the period from 1994 to 2001 for their antibiotic patterns and results showed high resistance to sulfisoxazole and tetracycline as 95% and 86%, respectively, Hui *et al.* (2015) who reported *Salmonella* strains resistance to doxycycline (28.21%) in central China and Sodagari *et al.* (2015); who observed in Iran, high antimicrobial resistance to tetracycline was 81% in Iran. However, the obtained results differ from de Oliveira *et al.* (2006); who tested The antimicrobial resistance of 79 *S. enteritidis* isolates from foods

including beef meat and poultry meat individually and resistance observed was to gentamycin (12.71%) and neomycin (17.7%), Van *et al.* (2007); who isolated *Salmonella* from raw food samples including chicken and tested for their susceptibility to antibiotics in Vietnam and recorded that out of 91 serotypes, 40.7%, 22.1% and 16.5% were resistant to tetracycline, ampicillin and sulfafurazole respectively, Foley and Lynne (2008); who reported that multidrug resistance for ampicillin, chloramphenicol, sulfonamides, tetracycline and streptomycin was detected in 9.3% of *Salmonella* strains tested, Hyeon *et al.* (2011); who estimated the antibiotic resistance of *Salmonellae* isolated from chicken meat and the resistance observed to tetracycline and chloramphenicol (16.7%) in Seoul, South Korea in 2009, Capuano *et al.* (2013); who reported that none of the isolates were resistant to ciprofloxacin and enrofloxacin, while low resistance to gentamicin, ceftazidime (1.7% each), cephalothin and Colistin sulfate (2.6% each) and most resistance was to ampicillin (45.6%), tetracycline (48.21%), streptomycin (52.59%) and sulfonamides (53.5%) in Italy.

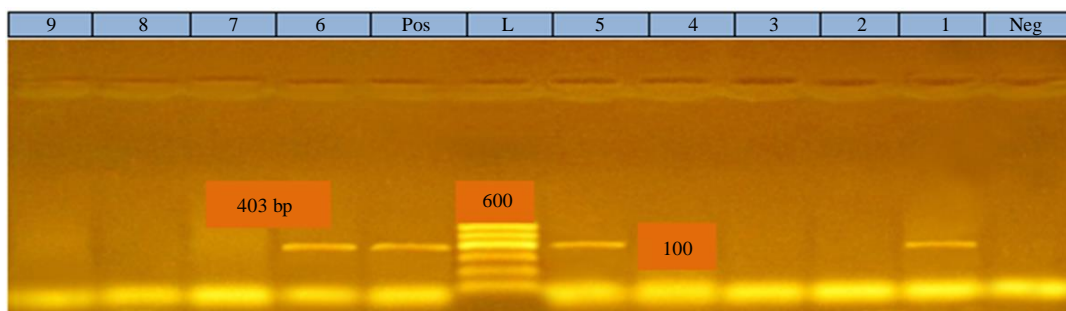
PCR is a perfect tool for accurate detection of *Salmonella* resistant genes revealed that genotypic analysis of *Salmonella* strains *qepA* (a resistant gene for quinolones) was reported with a percentage of (3 out of 9 isolates) 33.3% as in Fig. 1. Our result differs from Silva-Sanchez *et al.* (2011); who reported that no *Salmonella* isolates showed the presence of *qepA* during his study and Lunn *et al.* (2010); who found that one isolate (2.4%) showed the presence of *qepA*. The *bla<sub>TEM</sub>* gene, a resistant gene encoded for B- lactamases was reported in this study with a percentage of 100% in all *Salmonella* serotypes as in Fig. 2. This result agreed but with higher percentage with previous report as in Canada, the percentage of *bla<sub>TEM</sub>* gene in *Salmonella* isolates was 17% (Aslam *et al.*, 2012), in Korea, 90.5% penicillin-resistant *S. Enteritidis* carried

the *bla*<sub>TEM</sub> gene (Hur *et al.*, 2011) and in china, *bla*<sub>TEM</sub> gene detected in 51.6% of 62 ceftriaxone resistant *Salmonella* isolates (Yang *et al.*, 2010). The *tetA*-gene, a gene encoded for tetracycline resistance was detected in this study with a percentage of 88.89% (8 out of 9 isolates) as in Fig. 3. This result nearly in coordinated with Shahada *et al.* (2006); who reported that in Japan 89% of oxytetracycline-resistant *S. Infantis* from poultry carried the *tet* (A) gene, while this result differs from a study performed by Zhang *et al.* (2011); who recorded the presence of *tetA* gene in *Salmonella* isolates from poultry with a percentage of 73.1% and Ahmed and Shimamoto (2012); who identified tetracycline resistance gene *tetA* in 14 out of 21 (66.7%) *Salmonella* isolates. The *sul1* gene, a gene encoded for sulfonamide resistance was reported in this study with a

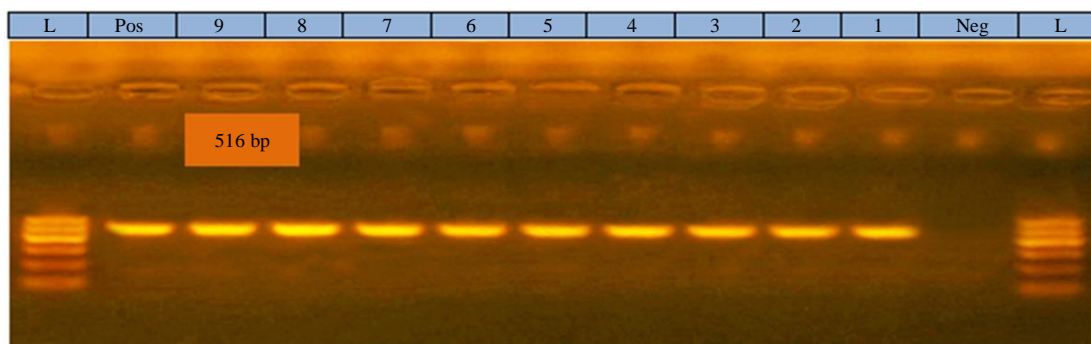
percentage of 77.78% (7 out of 9 isolates) as in Fig. 4. This result nearly similar with those of Zou *et al.* (2009); who detected *sul1* in 11 of 16 isolates with a percentage of 68.7%. The *aacC* gene (a resistance gene for Aminoglycosides) was reported in this study with a percentage of 33.3% (3 out of 9 isolates) as in Fig. 5. This result differs from Lynne *et al.* (2008); who reported that *aacC* gene in 5 from 7 isolates with the percentage of 71.4%. The high rate of antimicrobial genes detection in *salmonella* isolated from human food (chicken meat) consider potential risk for the human health and narrow the available medication choices to human cases in addition to increase the risk of retransmission *salmonella* species from human to poultry farms through the infected or carrier people engaged with the poultry industry.

**Table 5:** Numbers and percentages of Salmonella strains exhibiting resistance and sensitivity to various antimicrobial agents.

Antimicrobial agent	Number of resistant strains (NO)	Percentage of resistance strains	Number of sensitive strains (NO)	Percentage of sensitive strains (%)
Levofloxacin (Lev)	3	15.8	15	78.9
Sulfamethazine (Smz)	19	100.0	0	0.0
Tetracycline(T)	15	78.9	4	21.1
Amoxicillin (AX)	15	78.9	3	15.8
Neomycin (N)	12	63.2	5	26.3
Doxycycline (Do)	5	26.3	9	47.4
Ciprofloxacin (Cip)	4	21.1	11	57.9
Chloramphenicol (C)	8	42.1	9	47.4
Colistin (CL)	5	26.3	9	47.4
Gentamycin (Cn)	4	21.1	15	78.9

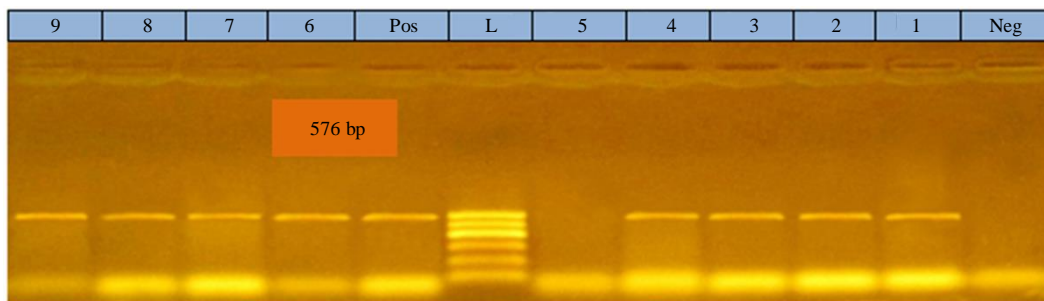


**Fig. 1:** Agarose gel electrophoresis showing specific PCR of Salmonella strains using primer set for *qepA* gene (403bp)

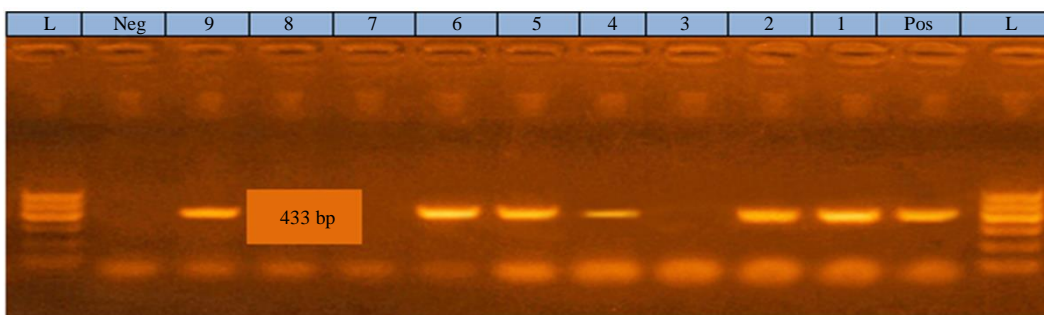


**Fig. 2:** Agarose gel electrophoresis showing specific PCR of Salmonella strains using primer set for *bla*<sub>TEM</sub> gene (516 bp)

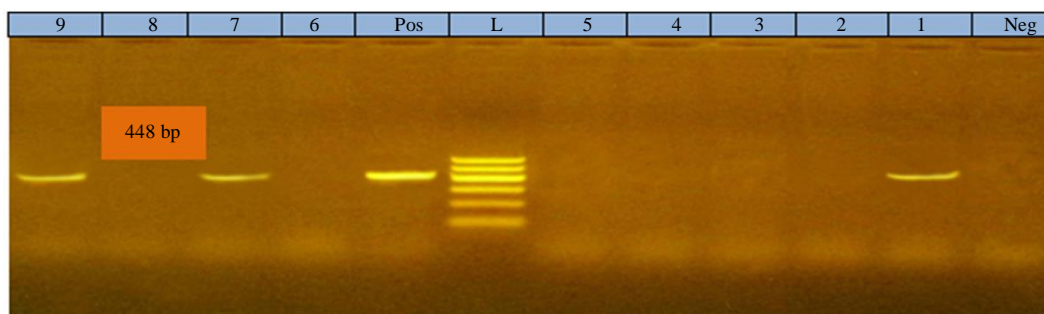




**Fig. 3:** Agarose gel electrophoresis showing specific PCR of Salmonella strains using primer set for *tetA* (A) gene (576 bp)



**Fig. 4:** Agarose gel electrophoresis showing specific PCR of Salmonella strains using primer set for *sul1* gene (433 bp)



**Fig. 5:** Agarose gel electrophoresis showing specific PCR of Salmonella strains using primer set for gene *aacC* (448 bp)

## Conclusion

Salmonellosis is an important global public health problem that has negative effects in poultry industry all over the world. As a result of extensive and in proper usage of antimicrobial agents in human and veterinary medicine specially as growth promoters in poultry feeds, there are dramatically increase in the MDR *Salmonella*; so that this study was focused on detection of some resistance genes to different antimicrobial agents that used in poultry farms such as *qepA* for quinolones, *sul1* for sulfonamide, *bla<sub>TEM</sub>* for  $\beta$ - lactams, *aacC* for aminoglycosides and *tetA* (A) for tetracycline. Because of much higher resistance of *Salmonellae* to different antimicrobial agents that reported in this study using sensitivity tests and PCR it's recommended to use antimicrobial agents in proper dose for recommended

time after applying sensitivity tests on the isolated *Salmonellae* to avoid these resistance that have adverse effect on poultry industry.

## Acknowledgment

All author acknowledge the technical support provided by Dr Hanan Abdien, Avian and Rabbit Medicine Department, Suez Canal University.

## Author's Contributions

All authors equally contributed in this work.

## Ethics

The experiment design approved by the Suez canal university ethical committee.

## References

- Abouelmaatti, R.R., A.M. Algammal, X. Li, J. Ma and E.A. Abdelnaby *et al.*, 2013. Cloning and analysis of Nile tilapia Toll-like receptors type-3 mRNA. *Central-European J. Immunol.*, 38: 277-282. DOI: 10.5114/ceji.2013.37740
- Ahmed, A.M. and T. Shimamoto, 2012. Genetic analysis of multiple antimicrobial resistance in *Salmonella* isolated from diseased broilers in Egypt. *Microbiol. Immunol.*, 56: 254-261. DOI: 10.1111/j.1348-0421.2012.00429.x
- Ahmed, A.M., T. Shimamoto and T. Shimamoto, 2014. Characterization of integrons and resistance genes in multidrug-resistant *Salmonella enterica* isolated from meat and dairy products in Egypt. *Int. J. Food Microbiol.*, 189: 39-44. DOI: 10.1016/j.ijfoodmicro.2014.07.031
- Ahmed, A.M., E.E. Younis, Y. Ishida and T. Shimamoto, 2009. Genetic basis of multidrug resistance in *Salmonella enterica* serovars Enteritidis and Typhimurium isolated from diarrheic calves in Egypt. *Acta Tropica*, 111: 144-149. DOI: 10.1016/j.actatropica.2009.04.004
- Algammal, A. and W. Elfeil, 2015. PCR based detection of Alpha toxin gene in *Clostridium perfringens* strains isolated from diseased broiler chickens. *Benha Vet. Med. J.*, 29: 333-338. DOI: 10.21608/bvmj.2015.31744
- Aslam, M., S. Checkley, B. Avery, G. Chalmers and V. Bohaychuk *et al.*, 2012. Phenotypic and genetic characterization of antimicrobial resistance in *Salmonella serovars* isolated from retail meats in Alberta, Canada. *Food Microbiol.*, 32: 110-117. DOI: 10.1016/j.fm.2012.04.017
- Authority, E.F.S., 2010. Analysis of the baseline survey on the prevalence of *Campylobacter* in broiler batches and of *Campylobacter* and *Salmonella* on broiler carcasses, in the EU, 2008-Part B: Analysis of factors associated with *Campylobacter* colonisation of broiler batches and with *Campylobacter* contamination of broiler carcasses; and investigation of the culture method diagnostic characteristics used to analyse broiler carcass samples. *EFSA J.*, 8: 1522-1522. DOI: 10.2903/j.efsa.2010.1522
- Ayoub, M.A., W.K. Elfeil, D. El Boraey, H. Hammam and M.A. Nossair, 2019. Evaluation of some vaccination programs in protection of experimentally challenged broiler chicken against newcastle disease virus. *Am. J. Anim. Vet. Sci.*, 14: 197-206. DOI: 10.3844/ajavsp.2019.197.206
- Bayoumi, A., M. Shahata and I. Sokkar, 1979. Studies on paratyphoid (clinical symptoms, macromorphological, micromorphological) infections of chickens and ducks in Upper Egypt. *Assiut Vet. Med. J.*
- Beli, E., E. Duraku and A. Telo, 2001. *Salmonella* serotypes isolated from chicken meat in Albania. *Int. J. Food Microbiol.*, 71: 263-266. DOI: 10.1016/S0168-1605(01)00613-4
- Capuano, F., A. Mancusi, R. Capparelli, S. Esposito and Y.T. Proroga, 2013. Characterization of drug resistance and virulotypes of *Salmonella* strains isolated from food and humans. *Foodborne Pathog. Dis.*, 10: 963-968. DOI: 10.1089/fpd.2013.1511
- Cattoir, V., L. Poirel and P. Nordmann, 2008. Plasmid-mediated quinolone resistance pump QepA2 in an *Escherichia coli* isolate from France. *Antimicrob. Agents Chemother.*, 52:3801-3804. DOI: 10.1128/AAC.00638-08
- Chenu, J., J. Cox and A. Pavic, 2012. Classification of *Salmonella enterica* serotypes from Australian poultry using repetitive sequence-based PCR. *J. Applied Microbiol.*, 112: 185-196. DOI: 10.1111/j.1365-2672.2011.05172.x
- Cruchaga, S., A. Echeita, A. Aladueña, J. García-Peña and N. Frias *et al.*, 2001. Antimicrobial resistance in salmonellae from humans, food and animals in Spain in 1998. *J. Antimicrobial Chemotherapy*, 47: 315-321. DOI: 10.1093/jac/47.3.315
- Cruickshank, R., 1975. *Medical Microbiology: The Practice of Medical Microbiology*. 1st Edn., Churchill Livingstone, New York, ISBN-10: 0443011117, pp: 587.
- Colom, K., J. Pérez, R. Alonso, A. Fernández-Aranguiz and E. Lariño *et al.*, 2003. Simple and reliable multiplex PCR assay for detection of blaTEM, blaSHV and blaOXA-1 genes in Enterobacteriaceae. *FEMS Microbiol. Lett.*, 223: 147-151. DOI: 10.1016/S0378-1097(03)00306-9
- de Oliveira, F.A., A. Brandelli and E.C. Tondo, 2006. Antimicrobial resistance in *Salmonella enteritidis* from foods involved in human salmonellosis outbreaks in southern Brazil. *New Microbiol.*, 29: 49-54.
- Diab, M.S., M.S.A.E. Hafez, M.A. Ashry and W.K. Elfeil, 2019. Occurrence of avian influenza h5n1 among chicken, duck farms and human in Egypt. *Am. J. Anim. Vet. Sci.*, 14: 26-32. DOI: 10.3844/ajavsp.2019.26.32
- Dominguez, S.A. and D.W. Schaffner, 2009. Survival of *Salmonella* in processed chicken products during frozen storage. *J. Food Protect.*, 72: 2088-2092. DOI: 10.4315/0362-028X-72.10.2088
- Donado-Godoy, P., V. Clavijo, M. León, A. Arevalo and R. Castellanos *et al.*, 2014. Counts, serovars and antimicrobial resistance phenotypes of *Salmonella* on raw chicken meat at retail in Colombia. *J. Food Protect.*, 77: 227-235. DOI: 10.4315/0362-028X.JFP-13-276



- Donado-Godoy, P., V. Clavijo, M. Leon, M.A. Tafur and S. Gonzales *et al.*, 2012. Prevalence of Salmonella on retail broiler chicken meat carcasses in Colombia. *J. Food Protect.*, 75: 1134-1138.  
DOI: 10.4315/0362-028X.JFP-11-513
- Draz, A., A. El-Gohary and H. Samahy, 1997. Environmental pollution with certain bacterial pathogens of zoonotic importance in some poultry farms. Faculty of Veterinary Medicine, Assiut (Egypt).
- Duarte, D.A.M., A.R. Ribeiro, A.M.M. Vasconcelos, S.B. Santos and J.V.D. Silva *et al.*, 2009. Occurrence of Salmonella spp. in broiler chicken carcasses and their susceptibility to antimicrobial agents. *Brazilian J. Microbiol.*, 40: 569-573.  
DOI: 10.1590/S1517-83822009000300020
- Eid, H.I., A.M. Algammal, S.A. Nasef, W.K. Elfeil and G.H. Mansour, 2016. Genetic variation among avian pathogenic *E. coli* strains isolated from broiler chickens. *Asian J. Anim. Vet. Adv.*, 11: 350-356.  
DOI: 10.3923/ajava.2016.350.356
- Eid, H.M., A.M. Algammal, W.K. Elfeil, F.M. Youssef and S.M. Harb *et al.*, 2019. Prevalence, molecular typing and antimicrobial resistance of bacterial pathogens isolated from ducks. *Vet. World*, 12: 677-683. DOI: 10.14202/vetworld.2019.677-683
- El-Demerdash, M.Z., H.F. Abdien, W.K. Elfeil, S.A. Abdel-Wanis and S.H. Mosalem, 2016. Molecular characterization of salmonella resistant genes in poultry. Proceedings of the 9th International Veterinary Conference on One World, One Health, (CWH' 16).
- El-Ghany, W.A.A., S.S. El-Shafii and M. Hatem, 2012. A survey on Salmonella species isolated from chicken flocks in Egypt. *Asian J. Anim. Vet. Adv.*, 7: 489-501. DOI: 10.3923/ajava.2012.489.501
- Elfeil, W.K., R.R. Abouelmaatti, C. Sun, W. Han and X. Li *et al.*, 2012. Identification, cloning, expression of a novel functional anasplatyrynchos mRNA TLR4. *J. Anim. Vet. Adv.*, 11: 1727-1733.  
DOI: 10.3923/javaa.2012.1727.1733
- Elfeil, W.M.K., A.M. Algammal, R.R. Abouelmaatti, A. Gerdouh and M.M. Abdel-Daim, 2016. Molecular characterization and analysis of TLR-1 in rabbit tissues. *Central Eur. J. Immunol.*, 41: 236-242.  
DOI: 10.5114/ceji.2016.63121
- Elhady, M.A., A. Ali, W.H. Kilany, W.K. Elfeil and H. Ibrahim *et al.*, 2018. Field efficacy of an attenuated infectious bronchitis variant 2 virus vaccine in commercial broiler chickens. *Vet. Sci.*, 5: 49-49.  
DOI: 10.3390/vetsci5020049
- Enany, M.E., A.M. Algammal, A.M. Hanora, G.I. Shagar and W.K. Elfeil *et al.*, 2018. Molecular typing and evaluation of sidr honey inhibitory effect on virulence genes of MRSA strains isolated from Catfish in Egypt. *Pak. J. Pharmaceutical Sci.*, 31: 1865-1870.
- Ezzat, M., I. Shabana, A. Esawy and M. Elsothy, 2014. Detection of virulence genes in *Salmonella serovars* isolated from broilers. *Anim. Vet. Sci.*, 2: 189-193.  
DOI: 10.11648/j.av.20140206.16
- Finegold, S. and S. Martin, 1982. *Diagnostic Microbiology* 6th ed the CV Mosby Company, St. Louis Tranto, London. *Wiener Tierarstilich Mschr*, 6: 233-236.
- Foley, S. and A. Lynne, 2008. Food animal-associated Salmonella challenges: Pathogenicity and antimicrobial resistance. *J. Anim. Sci.*, 86: E173-E187. DOI: 10.2527/jas.2007-0447
- Hassanein, R., S.F.H. Ali, A. El-Malek, A. Mohamed and M.A. Mohamed *et al.*, 2011. Detection and identification of Salmonella species in minced beef and chicken meats by using Multiplex PCR in Assiut city. *Vet. World*, 4: 5-11.  
DOI: 10.5455/vetworld.2011.5-11
- Hui, Y.Z., 2015. Serotypes and antimicrobial susceptibility of Salmonella spp. isolated from farm animals in China. *Front Microbiol.*, 6: 602-602.  
DOI: 10.3389/fmicb.2015.00602
- Huong, L.Q., F. Reinhard, P. Padungtod, T.T. Hanh and M.N. Kyule *et al.*, 2006. Prevalence of Salmonella in retail chicken meat in Hanoi, Vietnam. *Ann. NY Acad. Sci.*, 1081: 257-261.  
DOI: 10.1196/annals.1373.032
- Hur, J., J.H. Kim, J.H. Park, Y.J. Lee and J.H. Lee, 2011. Molecular and virulence characteristics of multi-drug resistant *Salmonella Enteritidis* strains isolated from poultry. *Vet. J.*, 189: 306-311.  
DOI: 10.1016/j.tvjl.2010.07.017
- Hyeon, J.Y., J.W. Chon, I.G. Hwang, H.S. Kwak and M.S. Kim *et al.*, 2011. Prevalence, antibiotic resistance and molecular characterization of *Salmonella serovars* in retail meat products. *J. Food Protect.*, 74: 161-166.  
DOI: 10.4315/0362-028X.JFP-10-327
- Ibekwe, A.M., S.E. Murinda and A.K. Graves, 2011. Genetic diversity and antimicrobial resistance of escherichia coli from human and animal sources uncovers multiple resistances from human sources. *PLoS ONE*, 6: e20819-e20819.  
DOI: 10.1371/journal.pone.0020819
- Ibrahim, M., H. Emeash, N.H. Ghoneim and M. Abdel-Halim, 2013. Seroepidemiological studies on poultry salmonellosis and its public health importance. *J. World's Poult. Res.*, 3: 18-23.
- Kauffmann, F., 1972. *Serological Diagnosis of Salmonella-Species*. 1st Edn., Munksgaard, Copenhagen, pp: 125.
- Kaushik, P., S. Kumari, S.K. Bharti and S. Dayal, 2014. Isolation and prevalence of Salmonella from chicken meat and cattle milk collected from local markets of Patna, India. *Vet. World*, 7: 62-65.  
DOI: 10.14202/vetworld.2014.62-65

- Kozačinski, L., M. Hadžiosmanović and N. Zdolec, 2006. Microbiological quality of poultry meat on the Croatian market. *Veterinarski Arhiv*, 76: 305-313.
- Le Bouquin, S., V. Allain, S. Rouxel, I. Petetin and M. Picherot *et al.*, 2010. Prevalence and risk factors for *Salmonella* spp. contamination in French broiler-chicken flocks at the end of the rearing period. *Prev. Vet. Med.*, 97: 245-251.  
DOI: 10.1016/j.prevetmed.2010.09.014
- Lunn, A.D., A. Fàbrega, J. Sánchez-Céspedes and J. Vila, 2010. Prevalence of mechanisms decreasing quinolone-susceptibility among *Salmonella* spp. clinical isolates. *Int. Microbiol.*, 13: 15-20.
- Lynne, A.M., B.S. Rhodes-Clark, K. Bliven, S. Zhao and S.L. Foley, 2008. Antimicrobial resistance genes associated with *Salmonella enterica* serovar newport isolates from food animals. *Antimicrob Agents Chemother*, 52: 353-356.  
DOI: 10.1128/AAC.00842-07
- Medeiros, M.A.N., D.C.N. Oliveira, D.P. Rodrigues and D.R.C. Freitas, 2011. Prevalence and antimicrobial resistance of *Salmonella* in chicken carcasses at retail in 15 Brazilian cities. *Revista Panamericana Salud Pública*, 30: 555-560.  
DOI: 10.1590/S1020-49892011001200010
- Moawad, A., 2009. Bacteriological studies on *Salmonella Enteritidis* isolated from different sources in Dakhlia Governorate. *Zoonoses, Veterinary Medicine*, Mansoura University.
- Mosalem, S., 2016. Studies on salmonella infection in chickens and it's relation to molecular characters. Department of Avian and Rabbit Medicine, Suezcanal University, Egypt.
- Murugkar, H., H. Rahman, A. Kumar and D. Bhattacharyya, 2005. Isolation, phage typing and antibiogram of *Salmonella* from man and animals in northeastern India. *Indian J. Med. Res.*, 122: 237-237.
- Nabil, N.M. and A.E. Yonis, 2019. Isolation of salmonella characterized by biofilm formation and disinfectant resistance from broiler chickens. *Alexandria J. Vet. Sci.*, 62: 26-36.  
DOI: 10.5455/ajvs.57274
- Rabie, N.S., N.O. Khalifa, M.E. Radwan and J.S. Afify, 2012. Epidemiological and molecular studies of *Salmonella* isolates from chicken, chicken meat and human in Toukh, Egypt. *Global Vet.*, 8: 128-32.
- Randall, L.P., S.W. Cooles, M.K. Osborn, L.J.V. Piddock and M.J. Woodward, 2004. Antibiotic resistance genes, integrons and multiple antibiotic resistance in thirty-five serotypes of *Salmonella enterica* isolated from humans and animals in the UK. *J. Antimicrobial Chemotherapy*, 53: 208-216.  
DOI: 10.1093/jac/dkh070
- Ruban, S., M. Thiyaageswaran and R. Sharadha, 2010. Isolation and identification of *Salmonella* spp. from retail chicken meat by polymerase chain reaction. *Int. J. Microbiol. Res.*, 1: 106-109.
- Sadoma, A., 1997. *Salmonella* in chickens in connection with human infection. *Veterinary Medicine*, Tanta Univerisity, Egypt.
- Sedeik, M.E., A.M. Awad, H. Rashed and W.K. Elfeil, 2018. Variations in pathogenicity and molecular characterization of Infectious Bursal Disease Virus (IBDV) in Egypt. *Am. J. Anim. Vet. Sci.*, 13: 76-86.  
DOI: 10.3844/ajavsp.2018.76.86
- Sedeik, M.E., A. Nahed, A.M. Awad, H.S. Abd-Elhamid and H.F. Ellakany *et al.*, 2019. Identifying intra-specific variability in the virulence of *Eimeria tenella* using SCAR markers. *Poult. Sci.*, 18: 151-158. DOI: 10.3923/ijps.2019.151.158
- Shahada, F., T. Chuma, T. Tobata, K. Okamoto and M. Sueyoshi *et al.*, 2006. Molecular epidemiology of antimicrobial resistance among *Salmonella enterica* serovar infantis from poultry in Kagoshima, Japan. *Int. J. Antimicrobial Agents*, 28: 302-307.  
DOI: 10.1016/j.ijantimicag.2006.07.003
- Silva-Sanchez, J., H. Barrios, F. Reyna-Flores, M. Bello-Diaz and A Sanchez-Perez *et al.*, 2011. Prevalence and characterization of plasmid-mediated quinolone Resistance genes in extended-Spectrum  $\beta$ -lactamase-producing Enterobacteriaceae isolates in Mexico. *Microbial. Drug Resistance*, 17: 497-505.  
DOI: 10.1089/mdr.2011.0086
- Sodagari, H.R., Z. Mashak and A. Ghadimianazar, 2015. Prevalence and antimicrobial resistance of *Salmonella* serotypes isolated from retail chicken meat and giblets in Iran. *J. Infect. Dev. Countries*, 9: 463-469. DOI: 10.3855/jidc.5945
- Soomro, A.H., M. Khaskheli, M.B. Bhutto, G. Shah and A. Memon *et al.*, 2011. Prevalence and antimicrobial resistance of *Salmonella serovars* isolated from poultry meat in Hyderabad, Pakistan. *Turk. J. Vet. Anim. Sci.*, 34: 455-460.
- Sultan, H.A., A. Ali, W.K. El Feil, A.H.I. Bazid and M.A. Zain El-Abideen *et al.*, 2019a. Protective efficacy of different live attenuated infectious bronchitis virus vaccination regimes against challenge with IBV variant-2 circulating in the Middle East. *Frontiers Vet. Sci.*, 6: 341-341.  
DOI: 10.3389/fvets.2019.00341
- Sultan, H.A., A.E. Arafa, S. Talaat, A.A. Gaballa and W.H. Kilany *et al.*, 2019b. Efficacy of clade 2.3.2 H5-recombinant baculovirus vaccine in protecting Muscovy and Pekin ducks from Clade 2.3.4.4 H5N8 highly pathogenic avian influenza infection. *Avian Dis.*, 63: 219-229. DOI: 10.1637/11880-042718.1

- Taha, N., 1989. Epidemiological studies on animal pathogens causing infantile diarrhea in Sharkia Governorate. Microbiology, Veterinary Medicine, Zagazig University, Egypt.
- Van, T.T.H., G. Moutafis, L.T. Tran and P.J. Coloe, 2007. Antibiotic resistance in food-borne bacterial contaminants in Vietnam. Applied Environ. Microbiol., 73: 7906-7911.  
DOI: 10.1128/AEM.00973-07
- White, D.G., S. Zhao, R. Sudler, S. Ayers and S. Friedman *et al.*, 2001. The isolation of antibiotic-resistant *Salmonella* from retail ground meats. New England J. Med., 345: 1147-1154.  
DOI: 10.1056/NEJMoa010315
- WHO, 2004. Second joint FAO/OIE/WHO expert workshop on non-human antimicrobial usage and antimicrobial resistance: Management options: 15-18 March 2004, Oslo, Norway. World Health Organization, Geneva.
- WHO, 2007. Critically important antimicrobials for human medicine: categorization for the development of risk management strategies to contain antimicrobial resistance due to non-human antimicrobial use: Report of the second WHO Expert Meeting. Copenhagen, Denmark.
- Yang, B., D. Qu, J. Shen, M. Xi and S. Zhi *et al.*, 2010. Antimicrobial susceptibility and related genes of *Salmonella serovars* from retail food in Shaanxi province. Wei Sheng Wu Xue Bao, 50: 788-796.  
PMID: 20687345
- Yang, S.J., K.Y. Park, S.H. Kim, K.M. No and T.E. Besser *et al.*, 2002. Antimicrobial resistance in *Salmonella enterica* serovars Enteritidis and Typhimurium isolated from animals in Korea: Comparison of phenotypic and genotypic resistance characterization. Vet. Microbiol., 86: 295-301.  
DOI: 10.1016/S0378-1135(02)00009-3
- Zhang, C., Y. Ning, L. Song, H. Chen and R. Chen, 2011. Investigation of resistance to tetracycline and distribution of tetracycline resistance genes of *Salmonella* isolates from poultry. China Poultry, 33: 18-21.
- Zou, W., J. Frye, C.W. Chang, J. Liu and C. Cerniglia *et al.*, 2009. Microarray analysis of antimicrobial resistance genes in *Salmonella enterica* from preharvest poultry environment. J. Applied Microbiol., 107: 906-914.  
DOI: 10.1111/j.1365-2672.2009.04270.x